


Document title: <b>Visual Installation Guide – QSL – 30MT</b>		Document ID: QSL - 30 - L	Page: Pg 1 of 15	
Originated (date and sign.): 05.05.07 – Chris Portelli	Approved (date and sign.):	QA review (date and sign.):		
Document file: Quick Site Guide – Version X [Rev.02]		Issue date --- Revision: 05.05.2007 --- Rev:02 15.05.2012		

## *Visual Installation Guide – Quick site Light Version*

Screen shots given on this guide are based on the 30 meter test site.


This document is intended to assist during the installation of the QS (Quick site) in conjunction with erection and site designs.

The process in this example is not taking in consideration plastering of the walls, diesel tank, and BTS cabinet installation. Only 2 antennas and four cables have been installed. An addition of two more days is required for a complete site installation.

This product is currently available at Jarlso AS – [www.jarlso.com](http://www.jarlso.com)

### TABLE OF CONTENTS

			<i>Page</i>
1.1		Important information and TOC	01
<hr/>			
2.1	Day 1 -	Site preparation	02
		Delivery of tower and all materials	03
2.2	Day 2 -	Steel structure assemble	04 to 05
		Painting of the first coat on the tower	06
		Startup – Placement of blocks	06
2.3	Day 3 -	Continuation – Placement of blocks	07
		Painting of the Second coat on the tower	07
2.4	Day 4 -	Completion of brick wall and gate installation	08
		Grounding installation	08
2.5	Day 5 -	30m tower erection	09
2.6	Day 6 -	Antenna and coaxial installation	10
		Steel wire on top of concrete fence	11
2.7	Day 7 -	Grating Installation	11
		Meter and power box installation	12
		Generator Installation	12
2.8	Day 8 -	Finalizing Electrical and Grounding	13
		Tower paint touchup	13
		Cleaning up	13
		Site Complete	13
<hr/>			
3.1		Additional Pictures	14 to 15

Document title: <b>Visual Installation Guide – QSL – 30MT</b>		Document ID: QSL - 30 - L	Page: Pg 2 of 15	
Originated (date and sign.): 05.05.07 – Chris Portelli	Approved (date and sign.):	QA review (date and sign.):		
Document file: Quick Site Guide – Version X [Rev.02]		Issue date --- Revision: 05.05.2007 --- Rev:02 15.05.2012		

### Day 1 - Site preparation



6m<sup>2</sup> of land is being cleared to accommodate the QS frame. This area is nearly leveled at all side but still need minor adjustments



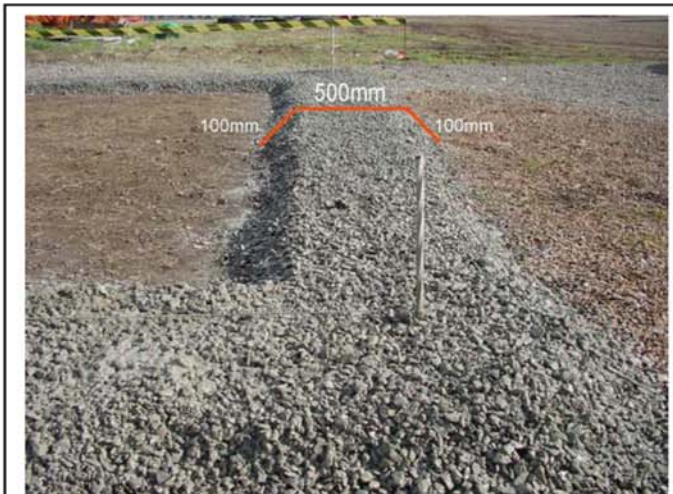
Once the exact difference between the 4 corners of the lot is known. The 4 corners are marked and a rope is set at a level



Gravel ½ inch is used in order to achieve an exact leveled area. This is places in a form of a square around the 4 corners



A mix of cement and water is purred on top of the leveled gravel. This is intended to keep the gravel in place during installation




Gravel side elevation after the cement and water mix is purred



Completed gravel surfacing



Document title: <b>Visual Installation Guide – QSL – 30MT</b>		Document ID: QSL - 30 - L	Page: Pg 3 of 15	
Originated (date and sign.): 05.05.07 – Chris Portelli	Approved (date and sign.):	QA review (date and sign.):		
Document file: Quick Site Guide – Version X [Rev.02]		Issue date --- Revision: 05.05.2007 --- Rev:02 15.05.2012		

Day 1 - Delivery of tower and all materials



Blocks



Tower main legs



Main beams



Secondary Beams



Bracings



Accessories



Document title: <b>Visual Installation Guide – QSL – 30MT</b>		Document ID: QSL - 30 - L	Page: Pg 4 of 15
Originated (date and sign.): 05.05.07 – Chris Portelli	Approved (date and sign.):	QA review (date and sign.):	
Document file: Quick Site Guide – Version X [Rev.02]		Issue date --- Revision: 05.05.2007 --- Rev:02 15.05.2012	



Day 2 - Steel structure assemble



Beam P4 is placed on location  
Levels are verified prior continuing with the next step



Beam P3 is placed on location.  
Levels are verified prior continuing with the next step



Beam P2 is placed on location – (P5 aside)  
Levels are verified prior continuing with the next step



Beams P1 and P5 placed on location  
Levels are verified prior continuing with the next step




Beam P6 is placed on location.  
Levels are verified.



Secondary Beams are also installed. Steel structure is complete



Document title: <b>Visual Installation Guide – QSL – 30MT</b>		Document ID: QSL - 30 - L	Page: Pg 5 of 15	
Originated (date and sign.): 05.05.07 – Chris Portelli	Approved (date and sign.):	QA review (date and sign.):		
Document file: Quick Site Guide – Version X [Rev.02]		Issue date --- Revision: 05.05.2007 --- Rev:02 15.05.2012		

Day 2 - Steel structure assemble



Left side of the complete steel structure



Right side of the complete steel structure



Connection of a secondary Beam to the Main beams



Connection of two corner main beams




It is essential for all the connection plates to be leveled



By using a Water pipe as level, we make sure that the completed structure is leveled



Document title: <b>Visual Installation Guide – QSL – 30MT</b>		Document ID: QSL - 30 - L	Page: Pg 6 of 15	
Originated (date and sign.): 05.05.07 – Chris Portelli	Approved (date and sign.):	QA review (date and sign.):		
Document file: Quick Site Guide – Version X [Rev.02]		Issue date --- Revision: 05.05.2007 --- Rev:02 15.05.2012		

Day 2 - Painting of the first coat on the tower



Painting of the first coat of Red paint on the tower



Painting of the first coat of White paint on the tower

Day 2 - Startup – Placement of blocks




Startup with the placement of the blocks



Startup with the placement of the blocks – The Rods are continuously inserted to make sure the blocks are in Place



Document title: <b>Visual Installation Guide – QSL – 30MT</b>		Document ID: QSL - 30 - L	Page: Pg 7 of 15	
Originated (date and sign.): 05.05.07 – Chris Portelli	Approved (date and sign.):	QA review (date and sign.):		
Document file: Quick Site Guide – Version X [Rev.02]		Issue date --- Revision: 05.05.2007 --- Rev:02 15.05.2012		

Day 3 - Continuation – Placement of blocks



Placement of the blocks – The Rods are continuously inserted to make sure the blocks are in Place

Placement of the blocks – The Rods are continuously inserted to make sure the blocks are in Place


Day 3 – Second coat of paint for the tower



Painting of the Second coat of White paint on the tower

Painting of the Second coat of Red paint on the tower



Document title: <b>Visual Installation Guide – QSL – 30MT</b>		Document ID: QSL - 30 - L	Page: Pg 8 of 15	
Originated (date and sign.): 05.05.07 – Chris Portelli	Approved (date and sign.):	QA review (date and sign.):		
Document file: Quick Site Guide – Version X [Rev.02]		Issue date --- Revision: 05.05.2007 --- Rev:02 15.05.2012		

Day 4 - Completion of brick wall, gate installation, Grounding installation



Continuation/Completion of brick wall and Gate Installation



Continuation/Completion of brick wall and Gate Installation



Grounding installation according to the specified design – Copper tape and rods are installed



All connections are tinned – Picture shows Steel wool, tower copper connection, flux and a stove for melting Tin.




Connection plate after Tinning

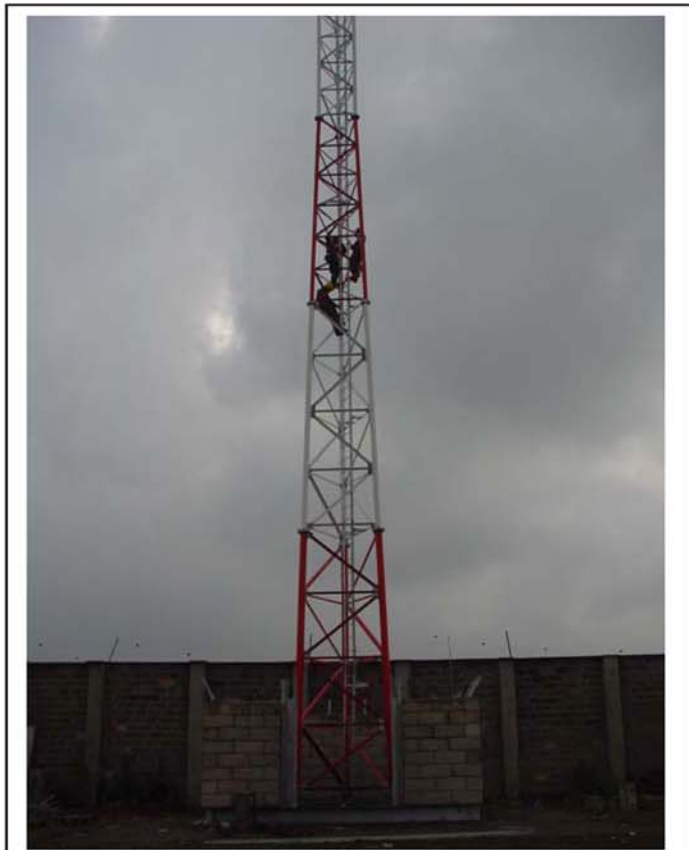
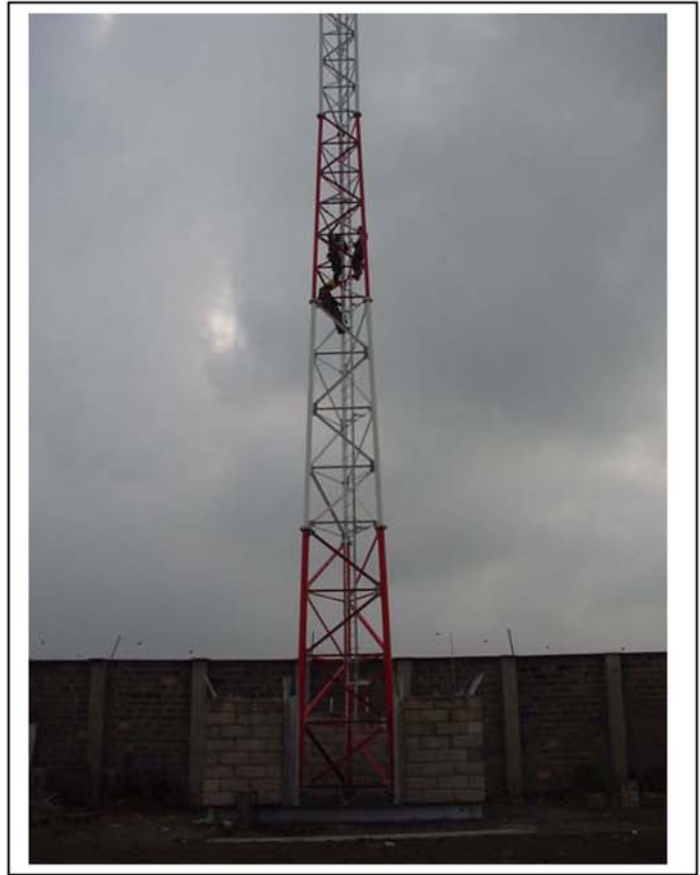
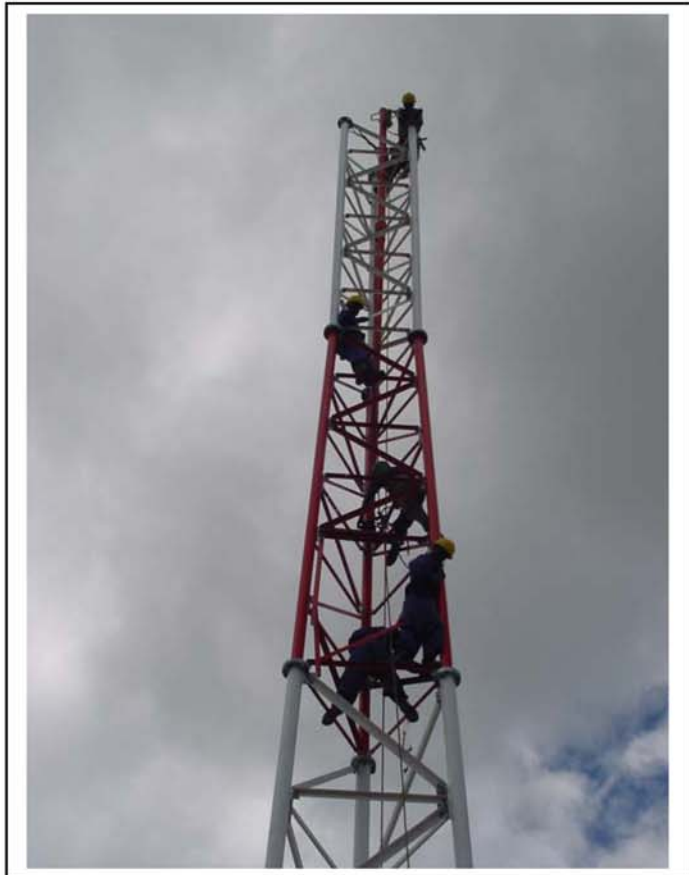


Grounding connection point to the tower leg



Document title: <b>Visual Installation Guide – QSL – 30MT</b>		Document ID: QSL - 30 - L	Page: Pg 9 of 15	
Originated (date and sign.): 05.05.07 – Chris Portelli	Approved (date and sign.):	QA review (date and sign.):		
Document file: Quick Site Guide – Version X [Rev.02]		Issue date --- Revision: 05.05.2007 --- Rev:02 15.05.2012		

Day 5 – 30m tower erection




Startup and completion of the tower erection including Ladder and Platforms



Installation of one MW bracket and two antenna poles



Document title: <b>Visual Installation Guide – QSL – 30MT</b>		Document ID: QSL - 30 - L	Page: Pg 10 of 15	
Originated (date and sign.): 05.05.07 – Chris Portelli	Approved (date and sign.):	QA review (date and sign.):		
Document file: Quick Site Guide – Version X [Rev.02]		Issue date --- Revision: 05.05.2007 --- Rev:02 15.05.2012		

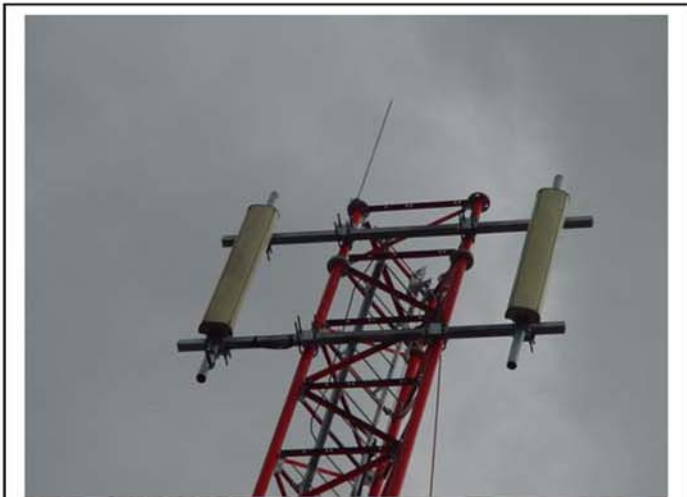
Day 6 - Antenna and coaxial installation



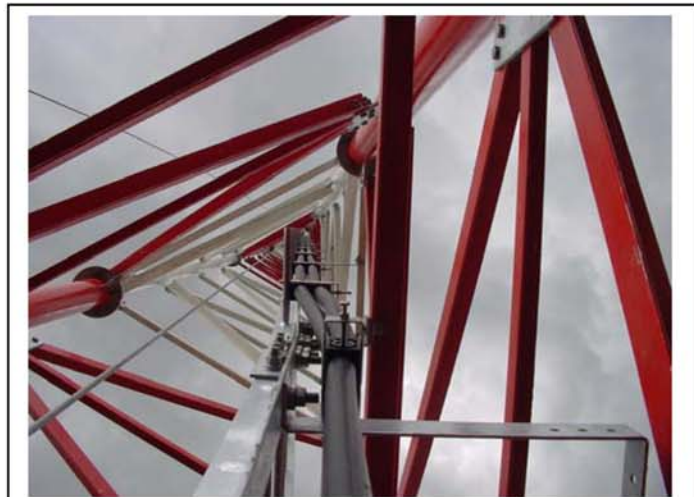
Indicates the antenna on the left side. Nr. 1 of 2 antennas



Indicates the antenna on the Right side. Nr. 2 of 2 antennas



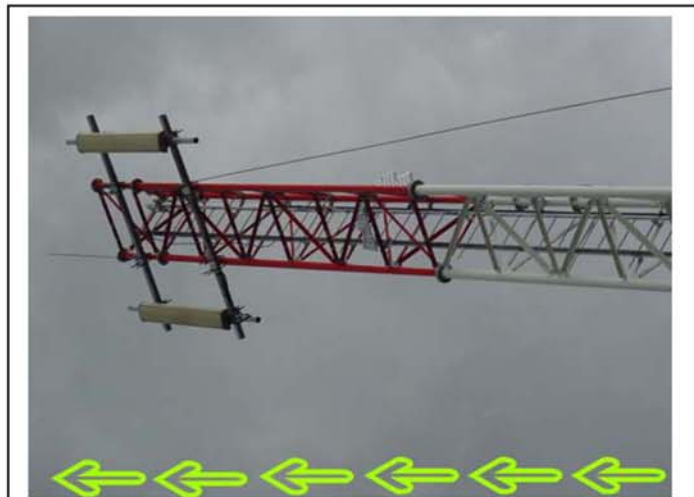
Antenna 1 and 2 installed



Installation of Coaxial cables (Two only for the Test site)




Connection of lower grounding kits.



Antenna and coaxial installation complete



Document title: <b>Visual Installation Guide – QSL – 30MT</b>		Document ID: QSL - 30 - L	Page: Pg 11 of 15	
Originated (date and sign.): 05.05.07 – Chris Portelli	Approved (date and sign.):	QA review (date and sign.):		
Document file: Quick Site Guide – Version X [Rev.02]		Issue date --- Revision: 05.05.2007 --- Rev:02 15.05.2012		

Day 6 - Steel wire on top of concrete fence



Installation of the Steel Wire as a preparation for future installation of Razor Wire



Installation of the Steel Wire as a preparation for future installation of Razor Wire

Day 7 - Grating Installation




Installation of the Grating



Installation of the Grating



Document title: <b>Visual Installation Guide – QSL – 30MT</b>		Document ID: QSL - 30 - L	Page: Pg 12 of 15	
Originated (date and sign.): 05.05.07 – Chris Portelli	Approved (date and sign.):	QA review (date and sign.):		
Document file: Quick Site Guide – Version X [Rev.02]		Issue date --- Revision: 05.05.2007 --- Rev:02 15.05.2012		

Day 7 - Meter and power box installation



Installation of the Electrical cabinet



Installation of the energy meter box.

Day 7 – Generator installation




Generator and exhaust pipe installation



Generator and exhaust pipe installation




Document title: <b>Visual Installation Guide – QSL – 30MT</b>		Document ID: QSL - 30 - L	Page: Pg 13 of 15	
Originated (date and sign.): 05.05.07 – Chris Portelli	Approved (date and sign.):	QA review (date and sign.):		
Document file: Quick Site Guide – Version X [Rev.02]		Issue date --- Revision: 05.05.2007 --- Rev:02 15.05.2012		

Day 8  
Finalizing electrical and grounding connection  
Tower paint touchup  
Cleaning up

Site Complete





<b>Document title:</b> <b>Visual Installation Guide – QSL – 30MT</b>		<b>Document ID:</b> QSL - 30 - L	<b>Page:</b> Pg 14 of 15	
<b>Originated (date and sign.):</b> 05.05.07 – Chris Portelli	<b>Approved (date and sign.):</b>	<b>QA review (date and sign.):</b>		
<b>Document file:</b> Quick Site Guide – Version X [Rev.02]		<b>Issue date --- Revision:</b> 05.05.2007 --- Rev:02 15.05.2012		

### Additional pictures



Side view before plastering



Side view after plastering



Front view after plastering



Side view after plastering




Grating from Top of tower



Main beams front connection before plastering



Document title: <b>Visual Installation Guide – QSL – 30MT</b>		Document ID: QSL - 30 - L	Page: Pg 15 of 15	
Originated (date and sign.): 05.05.07 – Chris Portelli	Approved (date and sign.):	QA review (date and sign.):		
Document file: Quick Site Guide – Version X [Rev.02]		Issue date --- Revision: 05.05.2007 --- Rev:02 15.05.2012		

### Additional pictures



Generator from top for Tower



Generator and electrical cabinet from tower



Connection bolts from top of the block to the main beam



Connection bolts from top of the block to the main beam



View of energy meter box



Front view from top of Tower